

Site 1 - Before Reclaim



Photo 1 – Removing Liner. We had to deal with significant amounts of ground water during the reclaim process of this impoundment.



Photo 2 – Dividing the impoundment to help manage incoming water. All water had to be collected / recycled during the reclaim process.

SCI Reclaim Services

wsteele@FernMountain.com

Bill Steele, President – 724.640.6387

Wes Steele, P.E. – 724.454.0110



Photo 3 – Installing DEP approved field drainage system. We recommended a field drainage system be installed to prevent any future problems for the property owner due to the amount of ground water draining into the area.



Photo 4 – This project consisted of moving approximately 25,000cy of earth.



Photo 5 – Hauling and spreading topsoil before seeding.



Photo 6 – Impoundment closed in and seeded.

Site 1 - After Reclaim



Photo 7– Reclaimed impoundment. Standing at the same location as Photo 1.

Site 2 - Before Reclaim



Site 3 - Before Reclaim



SCI Reclaim Services

wsteele@FernMountain.com

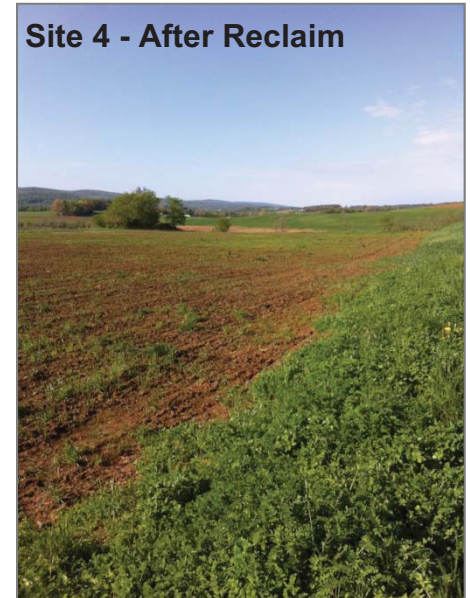
Bill Steele, President – 724.640.6387

Wes Steele, P.E. – 724.454.0110

Site 4 - Before Reclaim



Site 4 - After Reclaim



Site 2 - After Reclaim



Site 3 - After Reclaim

